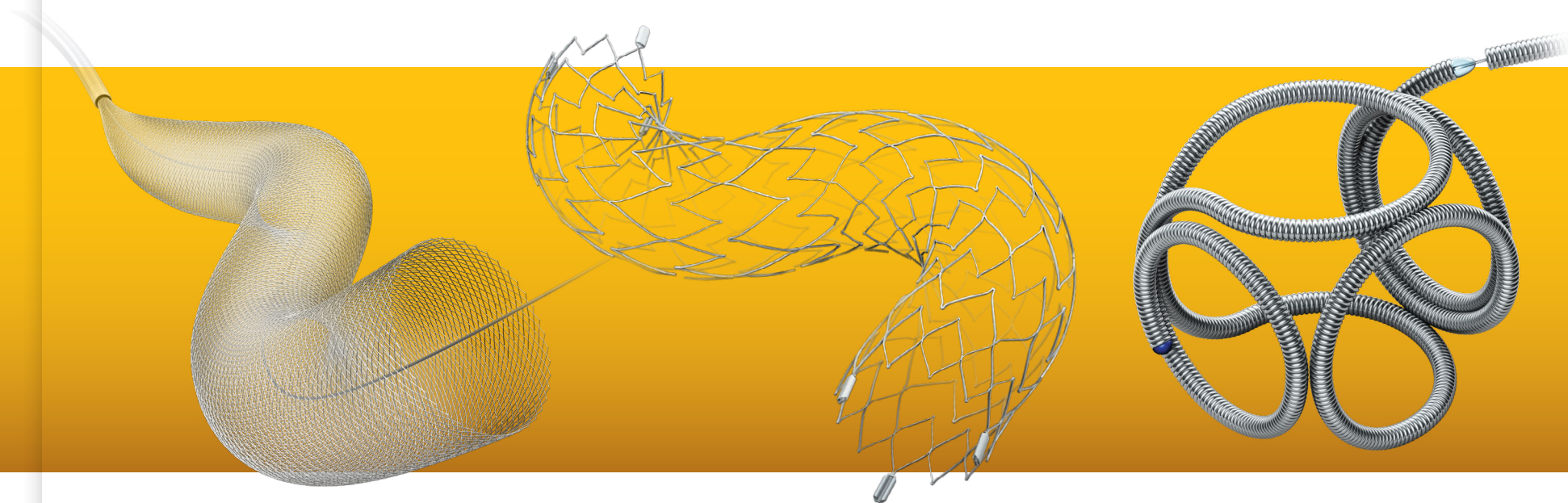


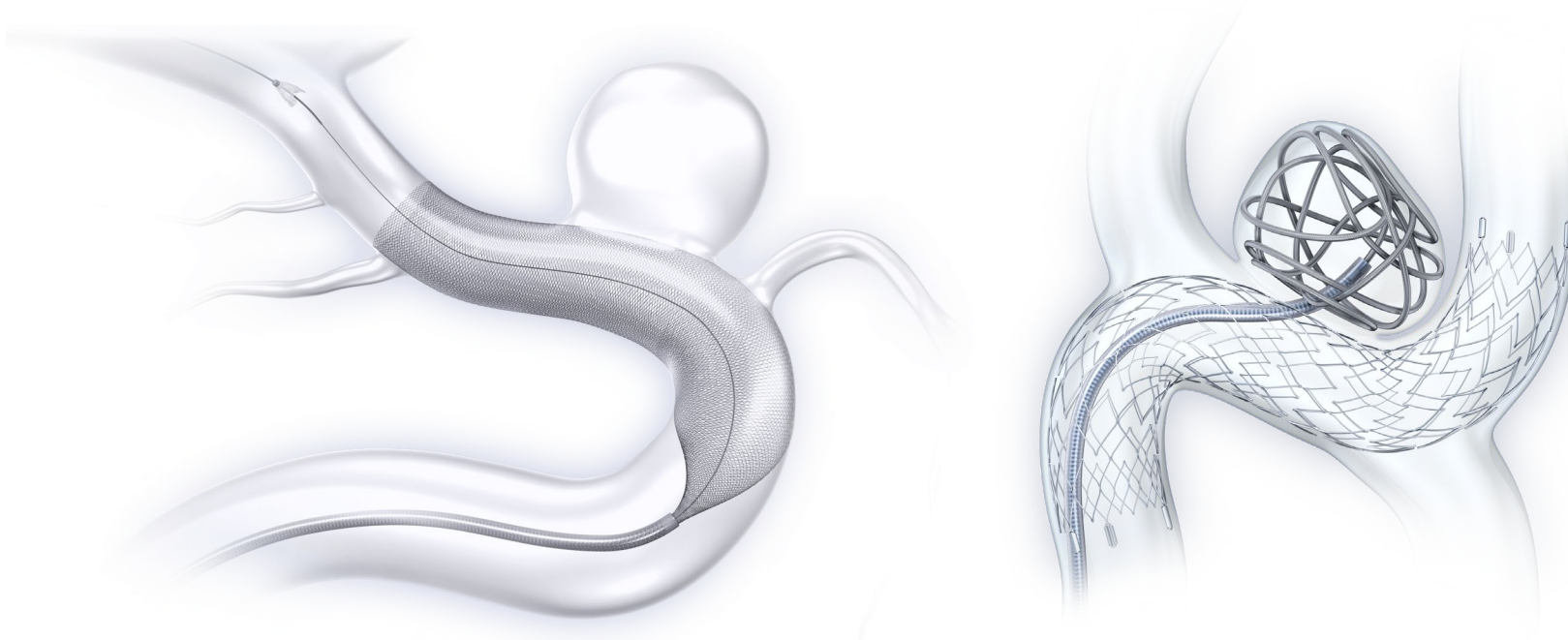
Stryker's Hemorrhagic Solutions

Your complete hemorrhagic portfolio



Hemorrhagic stroke patients rely on you. **You can rely on us.**

Whatever your treatment requires, Stryker delivers conformity, compatibility and versatility across all products. Our wide range of solutions has been developed based on physician preferences and advanced technology to deliver excellent, fast and more predictable care. When the moment is crucial for your patient, you can count on us. Explore this guide to see all the reasons why.

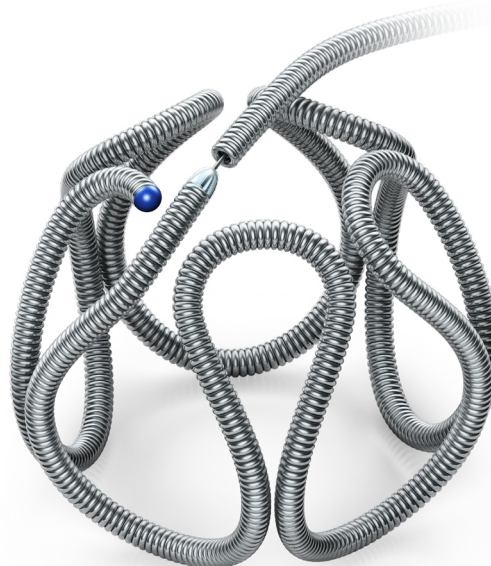


Target™ Detachable Coils

A trusted solution for the toughest cases



Target 360 Coils



Target 3D Coils



Target Helical Coils

Shapes

Our variety of shapes are designed to help you frame securely, fill uniformly, and finish by seeking voids within the aneurysm.

Diameters

Target XL Coils provide 2x more fill and 40% more width than Target 10-size Coils.

Target 10-size



Target XL



2x the fill

40% wider

Neuroform Atlas™ Stent System

When outcomes matter most

The ATLAS Study is the largest IDE of its class with 182 patients treated

84.7%

Primary efficacy endpoint

4.4%

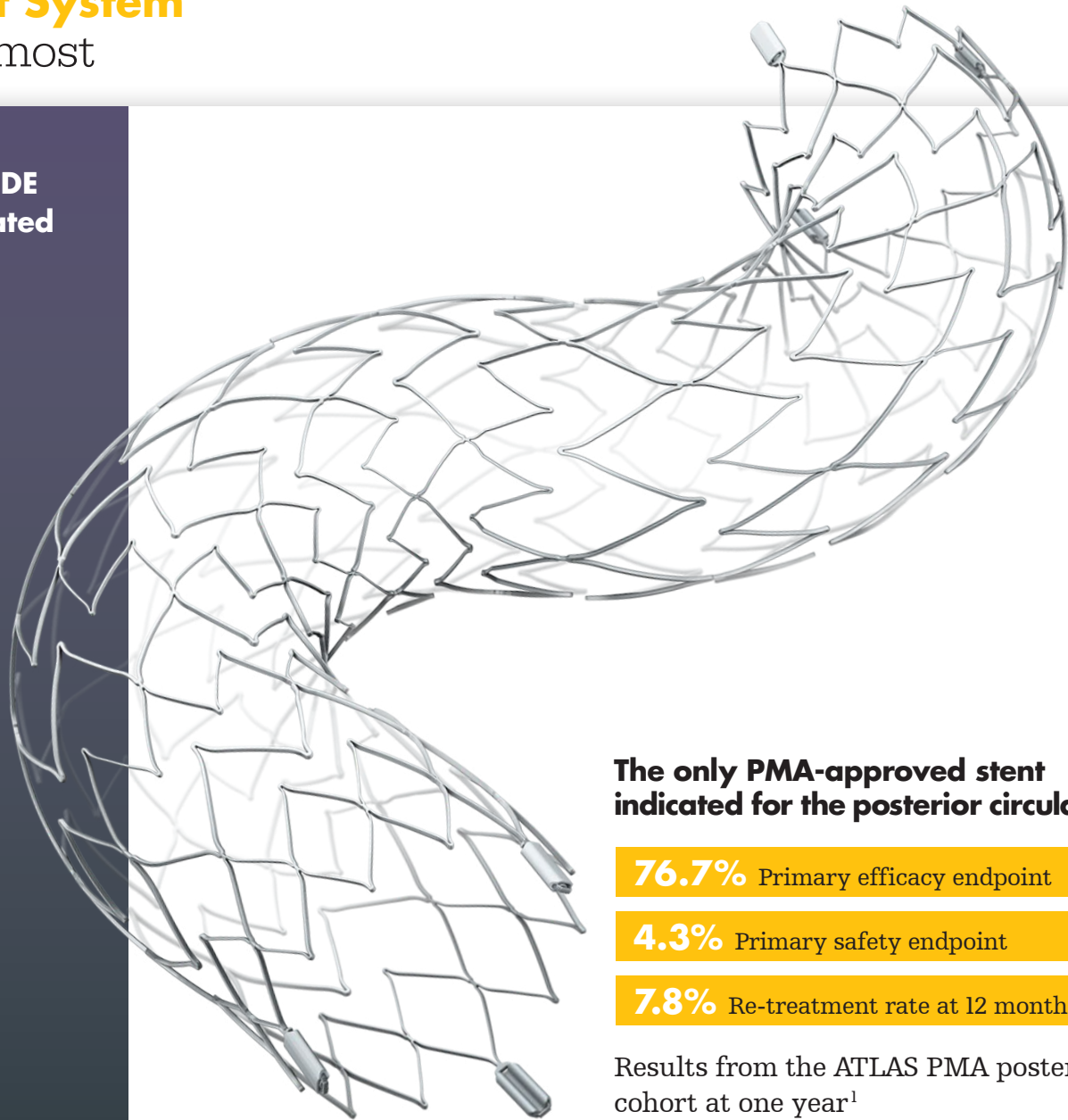
Primary safety endpoint

3.8%

Re-treatment rate at 12 months

Results from the anterior cohort of the Neuroform ATLAS Study¹

90% of the coils used in the study were Target Detachable Coils²



The only PMA-approved stent indicated for the posterior circulation

76.7% Primary efficacy endpoint

4.3% Primary safety endpoint

7.8% Re-treatment rate at 12 months

Results from the ATLAS PMA posterior cohort at one year¹

1. From the Neuroform Atlas Stent System Directions For Use
2. Anterior: n=182. Posterior: n=116.

TransForm™ Occlusion Balloon Catheter

Effortless performance

Fast

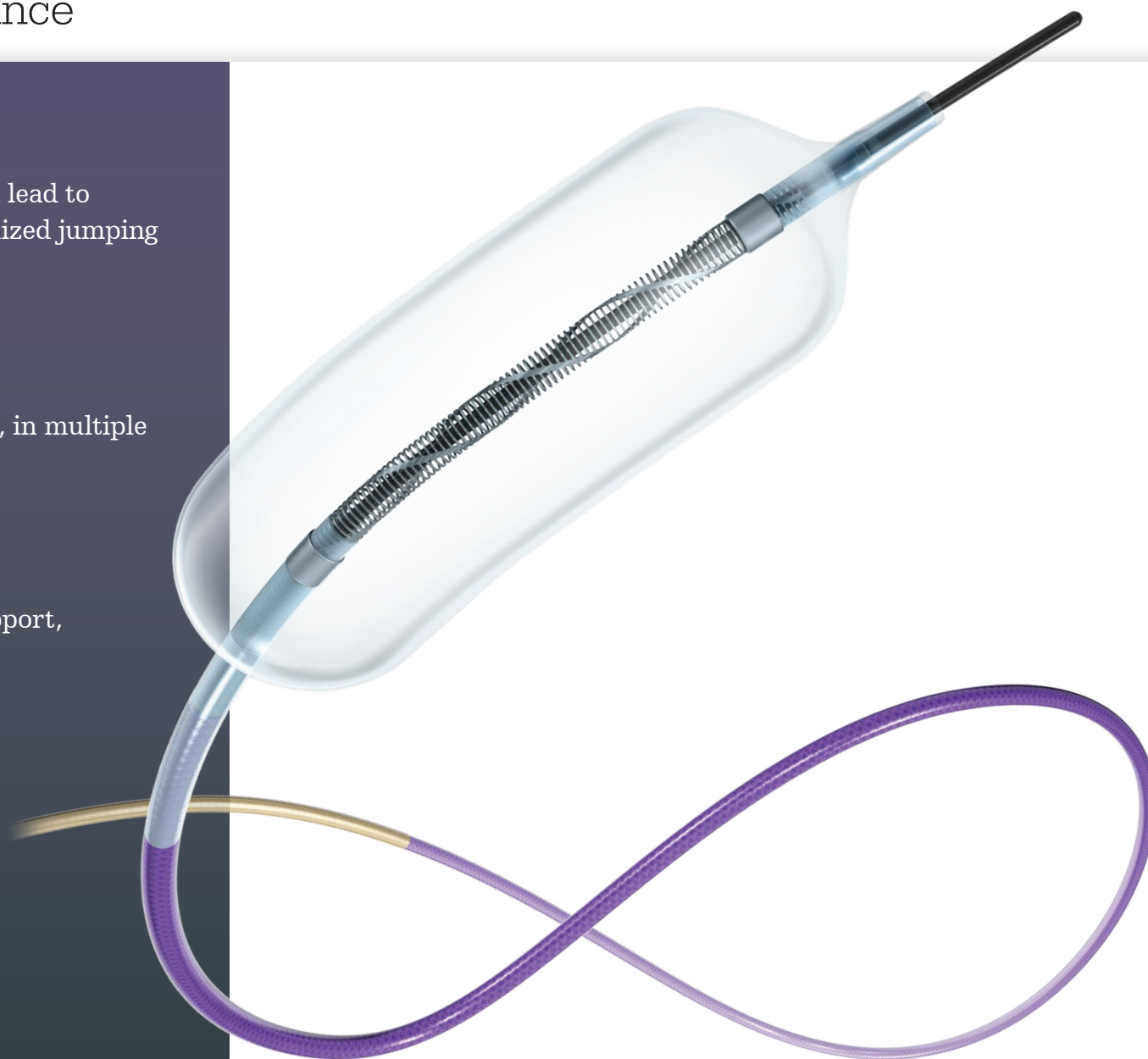
Fast inflation and deflation can lead to quicker wall apposition, minimized jumping and shorter procedure times.¹

Easy

Easy to use from start to finish, in multiple intracranial vasculatures.

Stable

Stable system designed for support, ease of access and trackability.



1. Competitive balloon inflation/deflation times are indexed off the inflation/deflation time.

Target Hemorrhagic Solutions

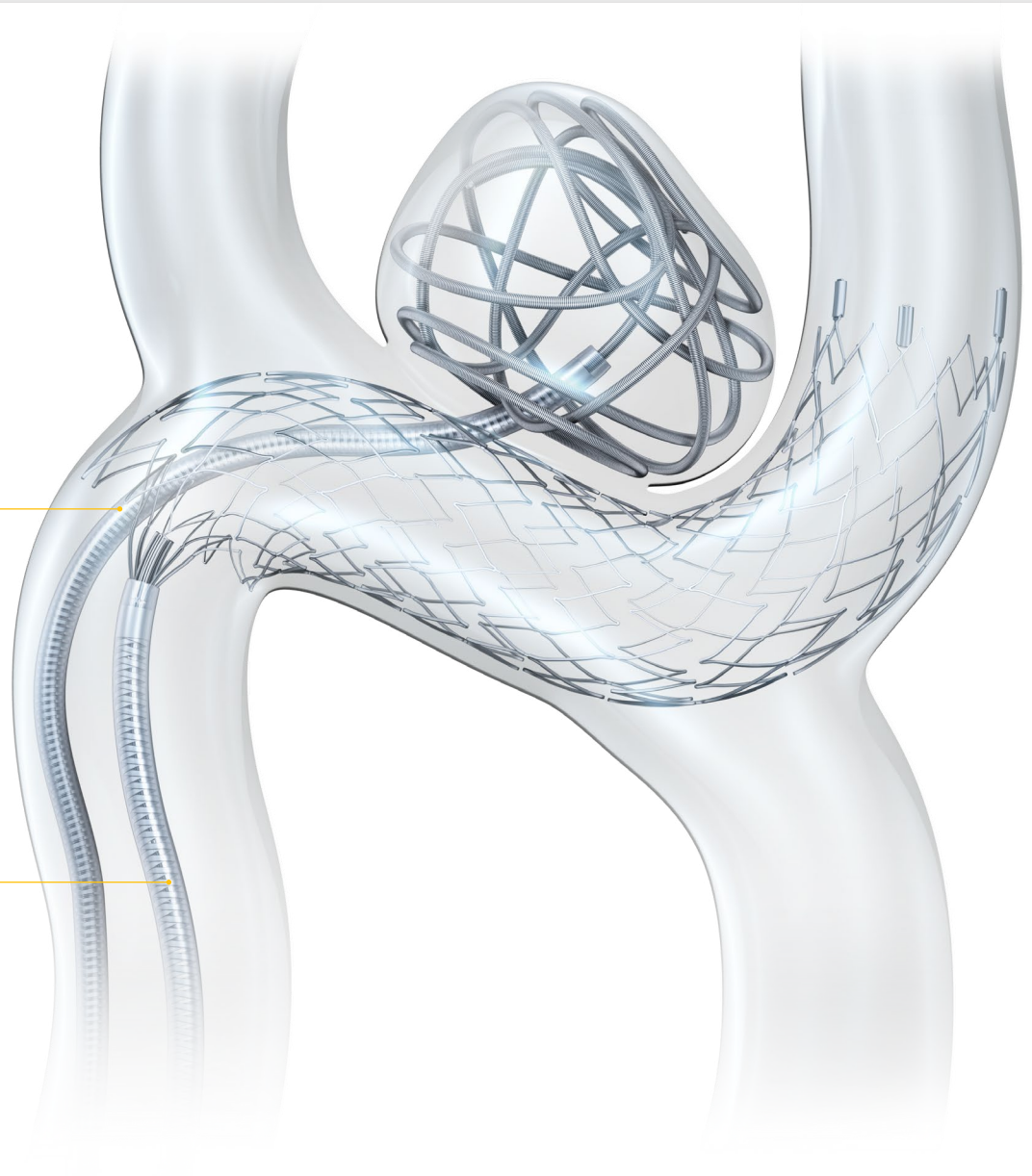
A solution designed for high performance

Excelsior SL-10 Microcatheter

The open loop shape of Target Coils and flexible distal tip of Excelsior SL-10 Microcatheter is designed to offer conformability in irregular shapes.

Excelsior XT-17 Microcatheter

Designed for stable, predictable therapy delivery of both Atlas and Target.



Target Hemorrhagic Solutions

Designed to deliver smooth deployment and enhanced stability

Compatibility

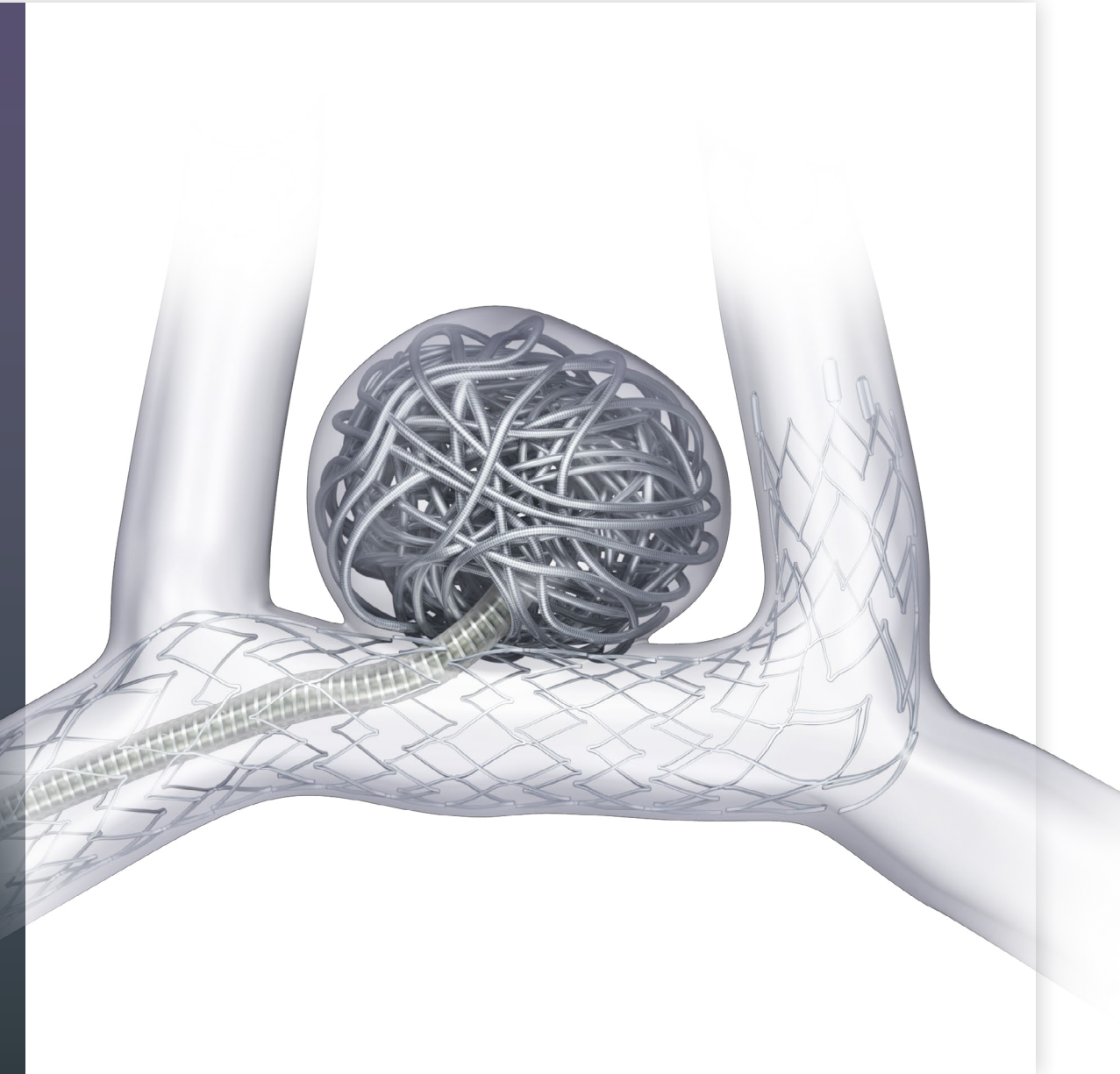
From access to deployment, every microcatheter, stent and coil are able to work together seamlessly, allowing for treatment in complex anatomy.

Versatility

The comprehensive portfolio of Target Hemorrhagic Solutions can be delivered via the technique of your choice.

Conformability

Each component is meticulously engineered to conform to the neurovascular anatomy, with the goal of optimizing endovascular treatment.



Target Hemorrhagic Solutions

Proven to work together

Providing a high degree of conformability in stent-assisted coiling

In bench testing, when paired with the optimized scaffolding of the Neuroform Atlas Stent System, the open loop of the Target Detachable Coil enabled greater “saddling” or “bridging the arch” than the other coils tested, which resulted in a higher level of neck coverage and optimal sac sealing.¹

Saddling with Neuroform Atlas Stent System and Target Detachable Coils

Target Coils outperformed competitive coils in filling the available space around the stent and the aneurysm wall when used in stent assisted coiling. The conformable Target Coil “saddles” the Neuroform Atlas stent and provides wall-to-wall vessel coverage.

Available space filled

| | |
|-----------------------------------|------------|
| Target (Stryker) | 89% |
| Smart (Penumbra) | 80% |
| Axium Prime ES (Medtronic) | 78% |
| Optima (Balt) | 75% |
| Hydroframe (Microvention) | 70% |

Up to 19% more space filled²

Example of saddling with Target Coils and the Neuroform Atlas Stent System



Image courtesy of Erik F. Hauck, MD

Stryker Target Coils

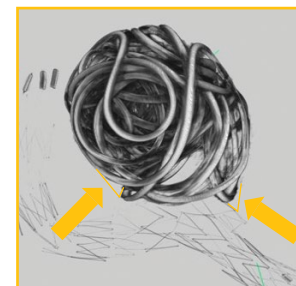


Image taken from internal bench test

Microvention Hydroframe Coils

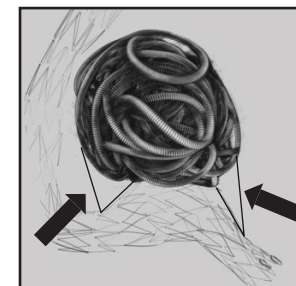


Image taken from internal bench test

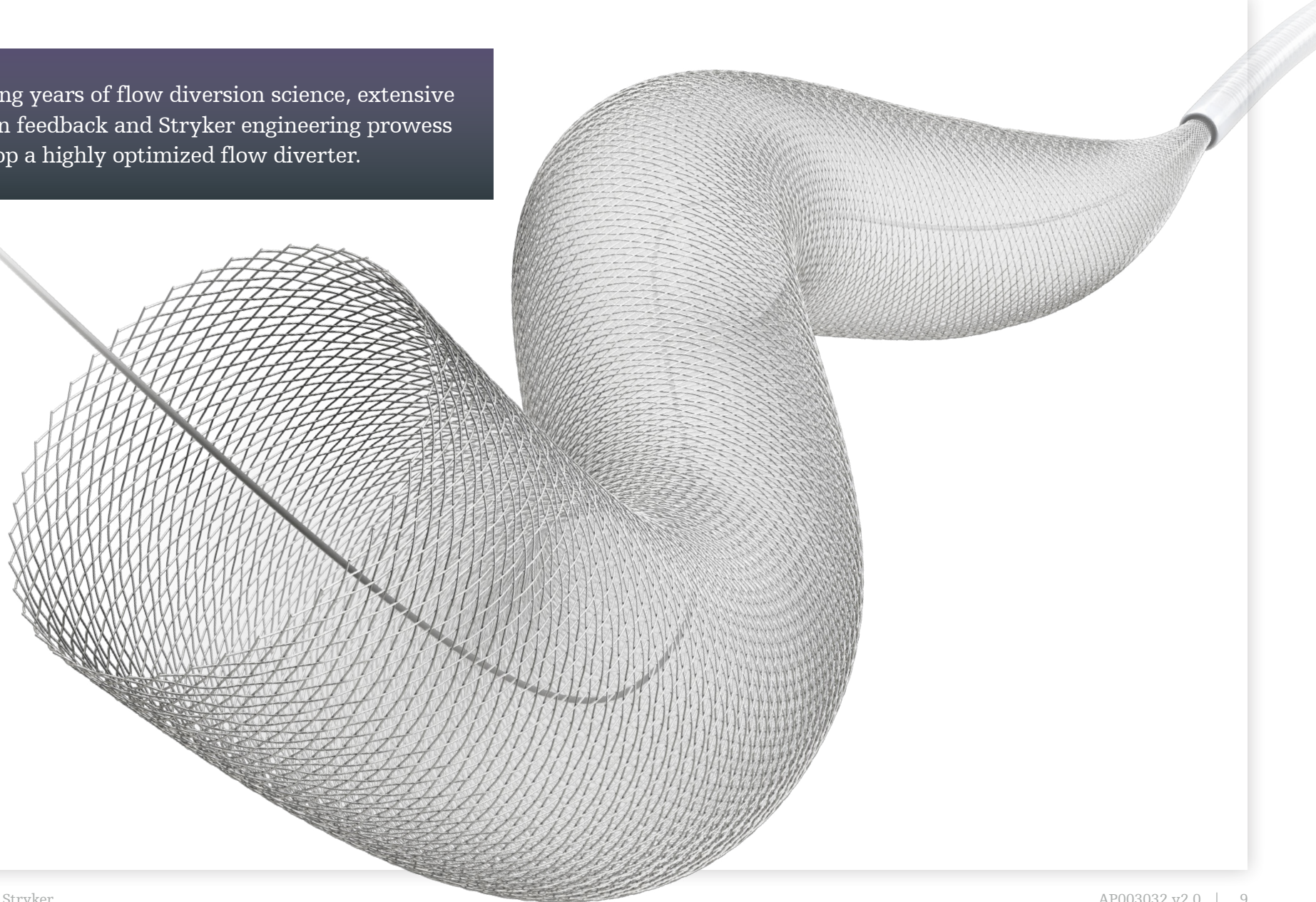
1. Bench test results. n=1 for each coil type. Bench test results may not be indicative of clinical performance.

2. Versus the listed competition.

Surpass Evolve™ Flow Diverter

Control defined

Combining years of flow diversion science, extensive physician feedback and Stryker engineering prowess to develop a highly optimized flow diverter.



Surpass Evolve™ Flow Diverter

Smooth delivery

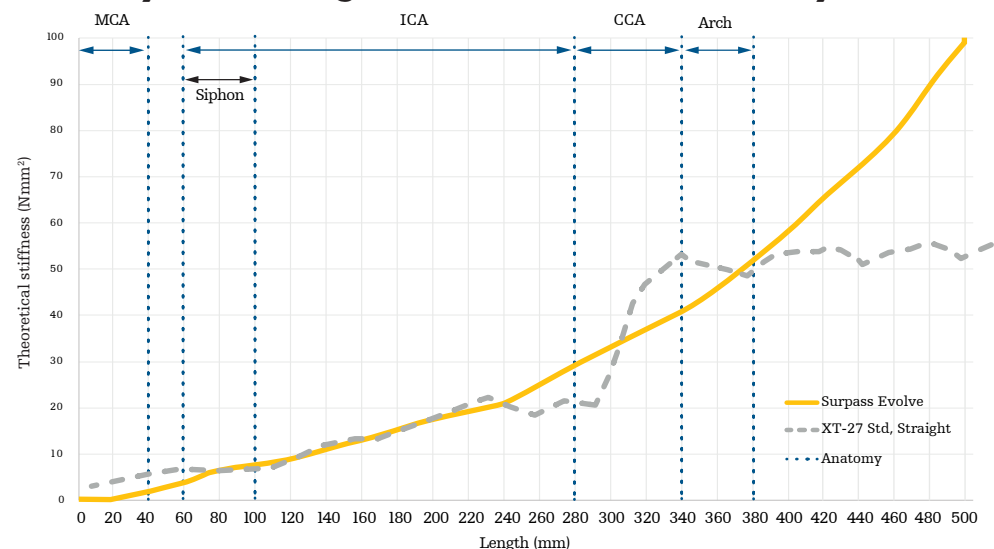
Enhanced design¹

The Surpass Evolve Flow Diverter delivery wire is engineered to optimize flexibility, trackability and responsiveness, allowing for a smooth and controlled user experience, start to finish.

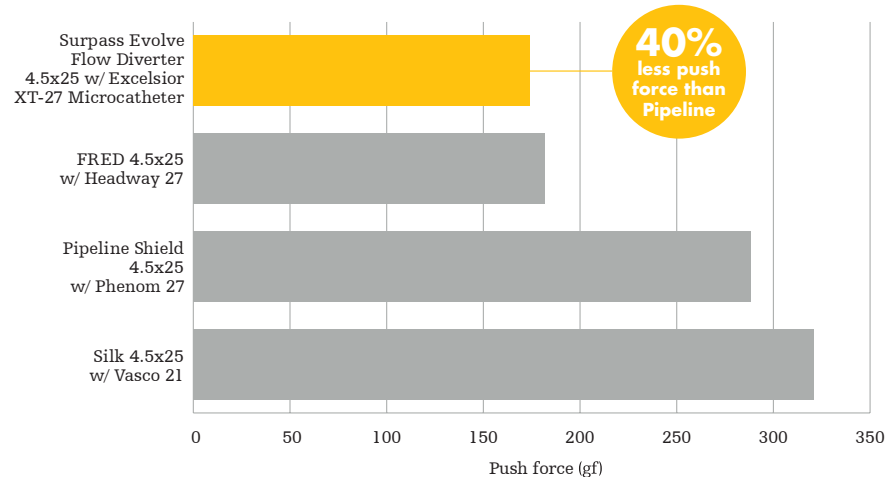
Lower push force

The flexibility profile of the solid core wire is designed to match anatomy and partner with **Excelsior XT-27 Microcatheter** standard straight, for lower friction forces, reliable resheath and easy access, even in highly tortuous vessels.

Delivery wire designed to match the flexibility of XT-27



Push forces in indicated microcatheters



1. Compared to Surpass Streamline Flow Diverter.

Surpass Evolve™ Flow Diverter

Reliable deployment

Accurate distal placement

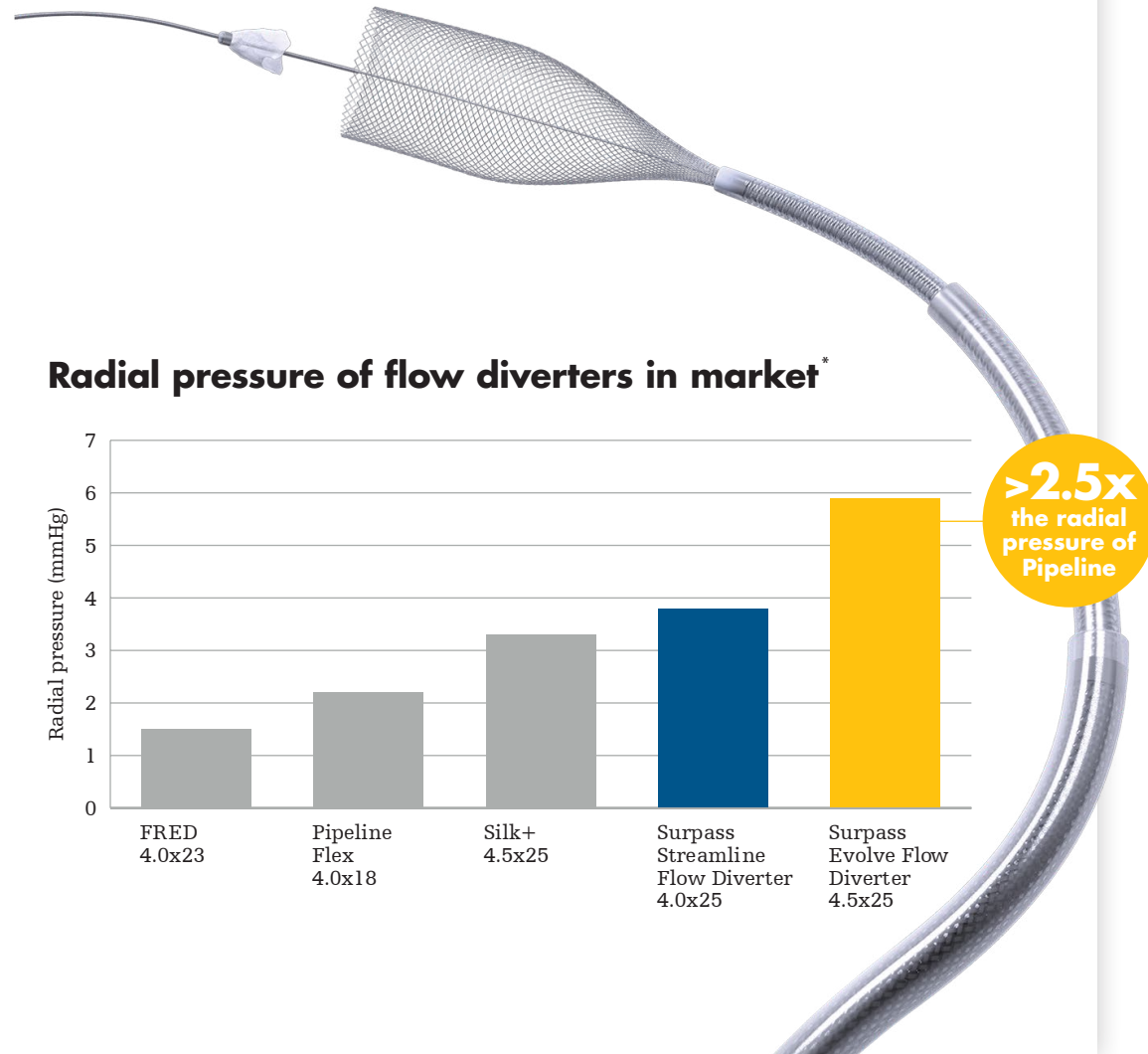
During deployment, the petal, almost bodiless in nature, moves quickly out of the way to allow the implant to open reliably.

Consistent opening

Engineered to maintain the radial pressure of Surpass Streamline Flow Diverter for reliable implant opening, distal to proximal.

Confident resheath

Solid core wire coupled with enhanced resheath pad allows for 1:1 responsiveness and control.



Surpass Evolve™ Flow Diverter

Optimized diversion

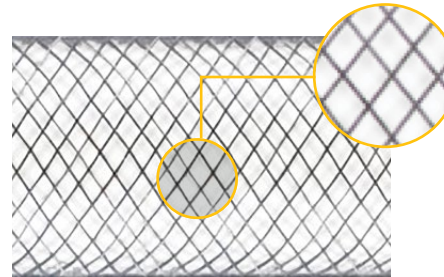
Mesh density

Despite having fewer wires than Surpass Streamline Flow Diverter, Surpass Evolve Flow Diverter maintains the same high mesh density by optimizing the braid angle.

Vessel wall apposition

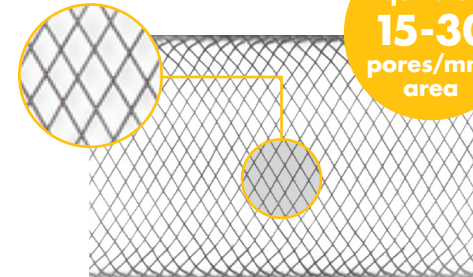
The higher braid angle enhances implant opening, conformability and vessel wall apposition.

Equivalent flow diversion profile



Surpass Streamline Flow Diverter

4.0 x 20in 4.25mm tube



Equivalent
15-30
pores/mm²
area

Surpass Evolve Flow Diverter

4.5 x 25in 4.25mm tube

Uniform wall apposition

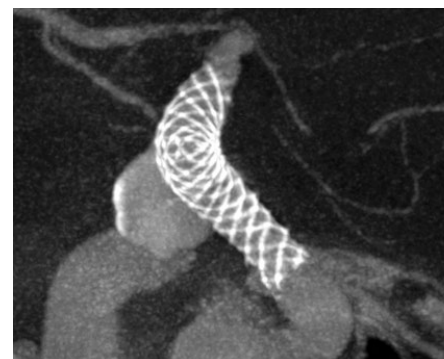


Image courtesy of Dr. Vitor Mendes Pereira, Toronto Western Hospital.

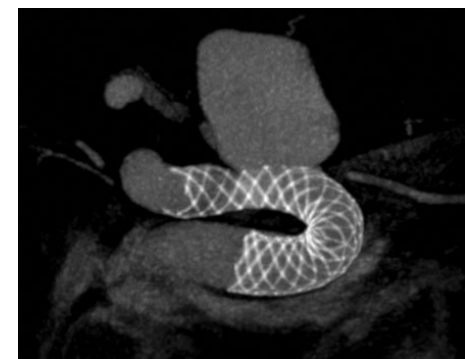
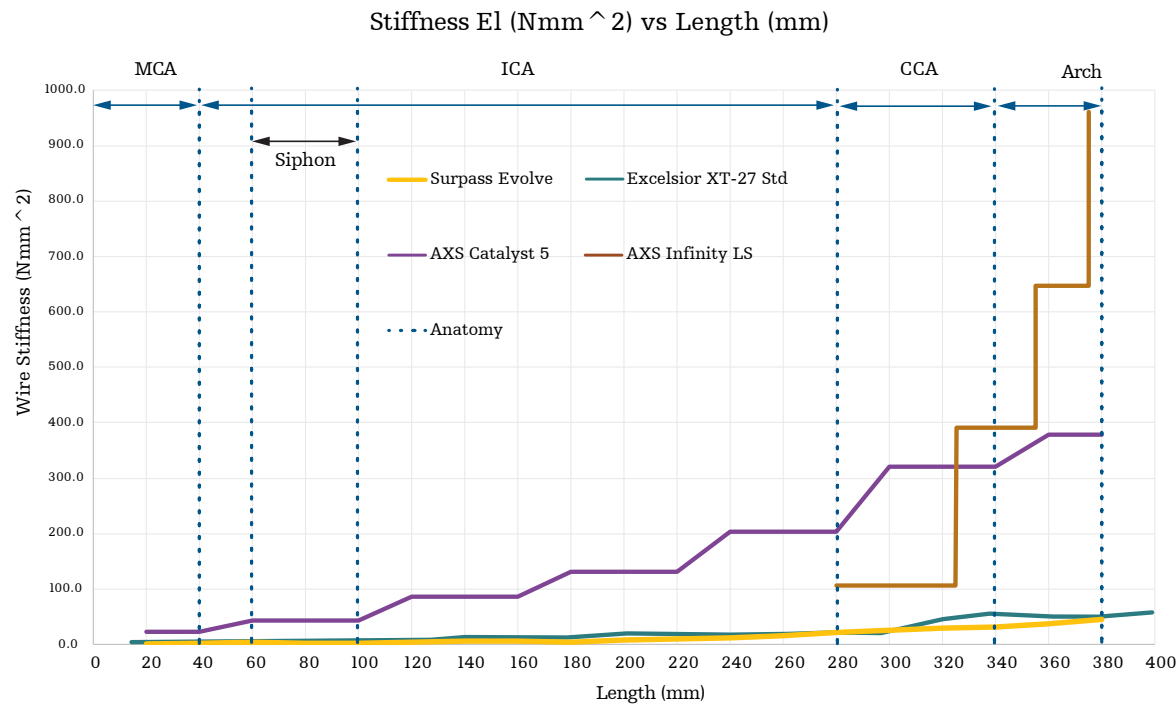


Image courtesy of Dr. Timo Krings, Toronto Western Hospital.

The Evolved Solution

A full access solution

Proven to perform together¹



Excelsior XT-27

Designed for easier access to distal anatomy and smooth FD deployment.

AXS Catalyst 5

Designed to provide distal support during deployment.

AXS Infinity LS

Designed to climb higher* and support where you need it.

*Compared to NeuronMax 088

1. Testing performed by Stryker. Data on file at Stryker. Bench test results may not necessarily be indicative of clinical performance.

Excelsior™ XT-17™ Microcatheter

Smooth tracking and stable delivery

| Product description | Total/distal length | Inner diameter | Distal/proximal OD | Tip markers | Approximate dead space | Particle compatibility | Maximum flow rate |
|------------------------------|---------------------|----------------|--------------------|-------------|------------------------|------------------------|-------------------|
| XT-17 standard straight | 150cm/7.5cm | 0.017in | 1.7F/2.4F | 2 | 0.3mL | 300-500 μ | 300psi |
| XT-17 standard pre-shaped 45 | 150cm/7.5cm | 0.017in | 1.7F/2.4F | 2 | 0.3mL | 300-500 μ | 300psi |
| XT-17 standard pre-shaped 90 | 150cm/7.5cm | 0.017in | 1.7F/2.4F | 2 | 0.3mL | 300-500 μ | 300psi |
| XT-17 standard pre-shaped J | 150cm/7.5cm | 0.017in | 1.7F/2.4F | 2 | 0.3mL | 300-500 μ | 300psi |
| XT-17 flex straight | 150cm/15cm | 0.017in | 1.7F/2.4F | 2 | 0.3mL | 300-500 μ | 300psi |
| XT-17 flex pre-shaped 45 | 150cm/15cm | 0.017in | 1.7F/2.4F | 2 | 0.3mL | 300-500 μ | 300psi |
| XT-17 flex pre-shaped 90 | 150cm/15cm | 0.017in | 1.7F/2.4F | 2 | 0.3mL | 300-500 μ | 300psi |
| XT-17 flex pre-shaped J | 150cm/15cm | 0.017in | 1.7F/2.4F | 2 | 0.3mL | 300-500 μ | 300psi |



Excelsior™ SL-10™ Microcatheter

Provides versatility in performance

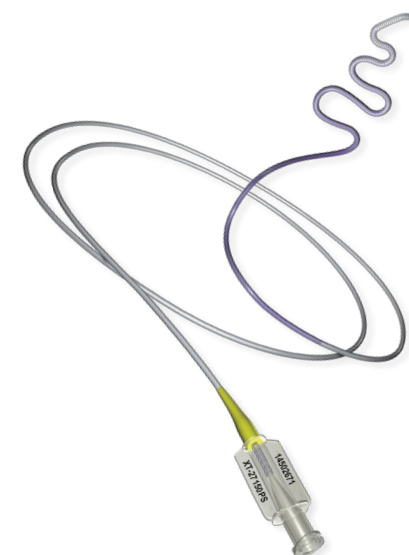
| Description | Total/distal length | Proximal/distal OD | Proximal/distal ID |
|-----------------------------|---------------------|----------------------------|----------------------------------|
| Straight, 2-tip marker | 150cm/6.0cm | 2.4F/1.7F 0.79mm/0.56mm | .0165in/.0165in 0.42mm/0.42mm |
| Pre-shaped 45, 2-tip marker | 150cm/6.0cm | | |
| Pre-shaped 90, 2-tip marker | 150cm/6.0cm | | |
| Pre-shaped J, 2-tip marker | 150cm/6.0cm | | |
| Pre-shaped C, 2-tip marker | 150cm/6.0cm | | |
| Pre-shaped S, 2-tip marker | 150cm/6.0cm | | |
| Straight, 1-tip marker | 150cm/6.0cm | | |



Excelsior XT-27™ Microcatheter

Improved trackability and excellent deployment

| Total length | Distal segment length | Tip shape | OD proximal/distal |
|--------------|-----------------------|-----------|---|
| 150cm | 6cm | Straight | 2.9F/2.7F .038in/.036in .97mm/.91mm |



AXS Infinity LS™ Long Sheath

Climb with confidence and stay in place

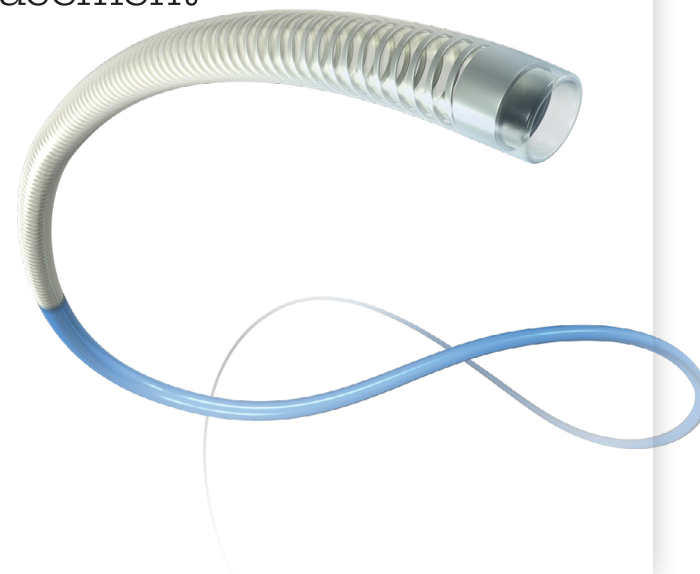
| Inner diameter | Outer diameter | Lengths | Distal flex segment | Accessories |
|----------------|----------------|------------------|---------------------|-------------------------------|
| 0.088in | 8F (2.77mm) | 70cm, 80cm, 90cm | 9.5cm | Short Tuohy-Borst and dilator |



AXS Catalyst™ 5

Simplify complex flow diversion with ultra-distal placement

| Inner diameter | Distal OD | Proximal OD | Effective length | Distal flex segment |
|------------------|---------------|---------------|------------------|---------------------|
| 0.058in (1.47mm) | 5.3F (1.76mm) | 5.6F (1.86mm) | 115cm | 5cm |



This document is intended solely for the use of healthcare professionals.

A physician must always rely on his or her own professional clinical judgment when deciding whether to use a particular product when treating a particular patient. Stryker does not dispense medical advice and recommends that physicians be trained in the use of any particular product before using it in a procedure. The information presented is intended to demonstrate the breadth of Stryker product offerings. A physician must always refer to the package insert, product label and/or instructions for use before using any Stryker product. Products may not be available in all markets because product availability is subject to the regulatory and/or medical practices in individual markets. Please contact your Stryker representative if you have questions about the availability of Stryker products in your area.

Stryker or its affiliated entities own, use, or have applied for the following trademarks or service marks: AXS Catalyst, AXS Infinity LS, Neuroform Atlas, Excelsior, SL-10, Stryker, Surpass Evolve, Surpass Streamline, Stryker, Target, Target XL, TransForm, XT-17, XT-27. All other trademarks are trademarks of their respective owners or holders.

The absence of a product, feature, or service name, or logo from this list does not constitute a waiver of Stryker's trademark or other intellectual property rights concerning that name or logo.



Stryker Neurovascular
47900 Bayside Parkway
Fremont, CA 94538
strykerneurovascular.com
Date of Release: DEC/2020
EX_EN_IL