



The next generation of eCLIPs products

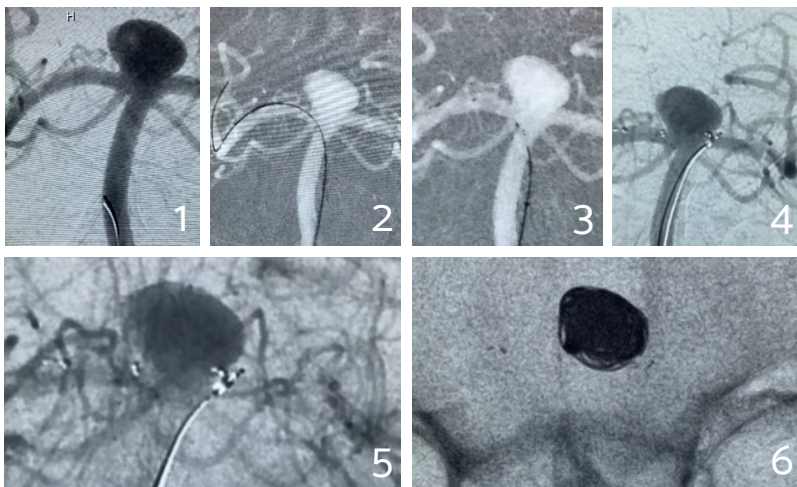
Intuitive delivery.
Flow diversion.

eCLIPs BIFURCATION SYSTEM ON A GUIDE WIRE

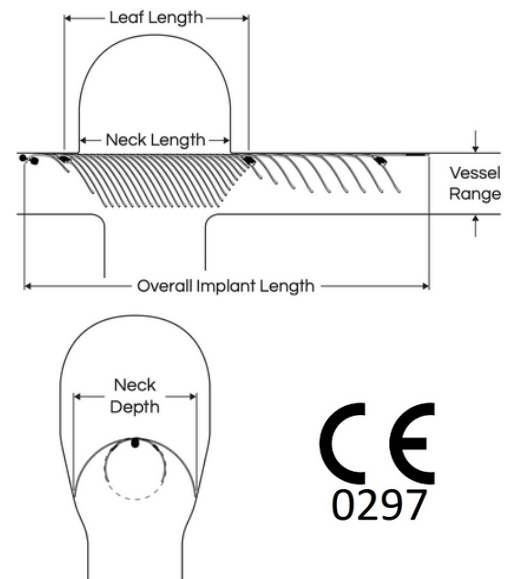
The system is comprised of an eCLIPs Implant and an eCLIPs Delivery Wire.

The Implant provides an initial framework or scaffold at the neck of the aneurysm to support coils, to provide a flow diverting effect and to serve as a platform for endothelial growth.

The shapeable Delivery Wire is designed to torque, deliver and detach the Implant at the target location. The System is available in two sizes: one is compatible with 0.027" ID microcatheters and the other is compatible with 0.021" ID microcatheters.



Pictured above: eCLIPs ease of delivery, neck bridging, flow diversion & coil retention.



eCLIPs Coil Support With Flow Diverting Effect

REF Number	Unconstrained Anchor Diameter (mm)	Vessel Range (mm)	Overall Implant Length (mm)	Leaf Length (mm)	Neck Length Range (mm)	Neck Depth Range (mm)	Compatible Catheter ID
SYSS-0037	3.15	1.5 - 2.5	15.4	6.5	≤5	≤4	0.021" (0.53mm)
SYSS-0036	3.6	1.5 - 3.25	16.5	7.5	≤6	≤4.75	0.027" (0.69mm)
SYSS-0041	3.6	1.5 - 3.25	20	11	6 - 9	≤5.85	0.027" (0.69mm)
SYSS-0039	3.6	1.5 - 3.25	23	14	9 - 12	≤5.85	0.027" (0.69mm)

eCLIPs Bifurcation Flow Diverter

REF Number	Unconstrained Anchor Diameter (mm)	Vessel Range (mm)	Overall Implant Length (mm)	Leaf Length (mm)	Neck Length Range (mm)	Neck Depth Range (mm)	Compatible Catheter ID
SYSS-0040	3.9	1.5 - 3.25	18.4	9.6	≤6	≤4.75	0.027" (0.69mm)

eCLIPs DESIGN INNOVATION: SPINE-RIB DESIGN

TWO FUNCTIONALLY DISCRETE SEGMENTS

- Anchor segment exerts stability
 - Does not impair flow to perforators
- Leaf segment bridges neck of aneurysm
 - Flow diversion
 - Platform for endothelial growth
 - Coil retention at any time point
 - Reduces water hammer effect
 - Mitigates compaction of intrasaccular contents

NON-TUBULAR

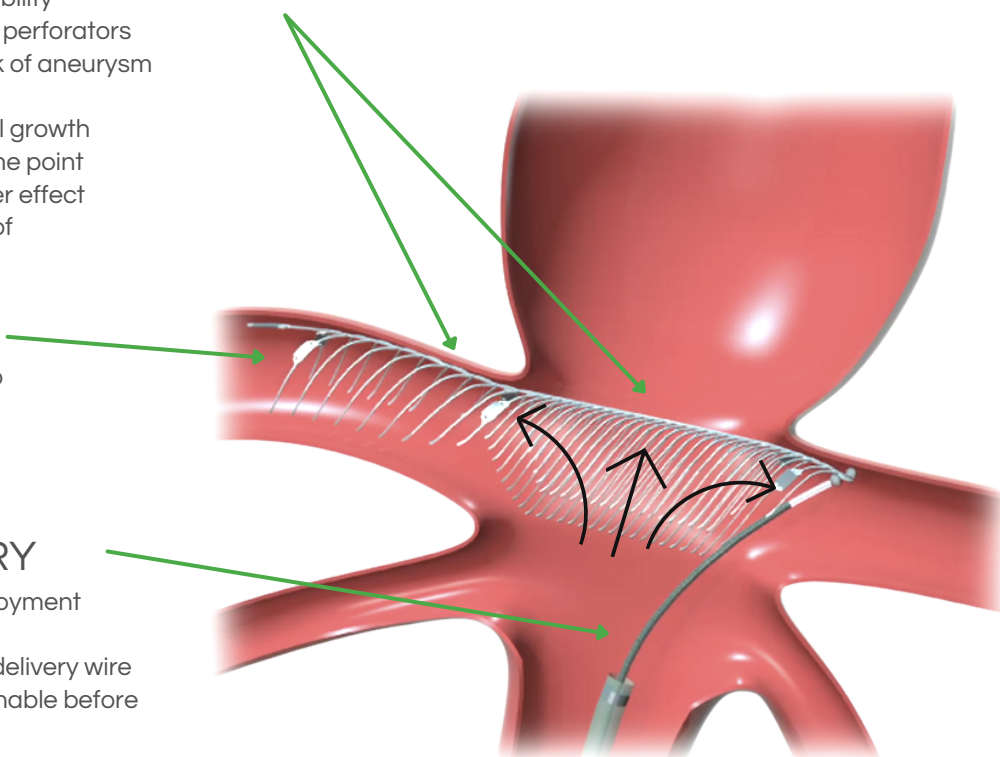
- Does not impede access to side branches
- Improved wall apposition and conformability

EASE OF DELIVERY

- Non-shortening upon deployment
- Self-aligning delivery
- Steerable and shapeable delivery wire
- Full retractable & repositionable before detachment

EXTRA-SACCCULAR

- Agnostic to aneurysm metrics



European Authorized Representative:

EMERGO EUROPE
Prinsessegracht 20
2514 AP The Haag
The Netherlands

evasc

© 2021 Evasc Neurovascular Enterprises
www.evasc.com

LABL-0119 Rev A

107-1099 West 8th Avenue
Vancouver, BC, Canada V6H 1C3
+1 (604) 742-3811
info@evasc.com